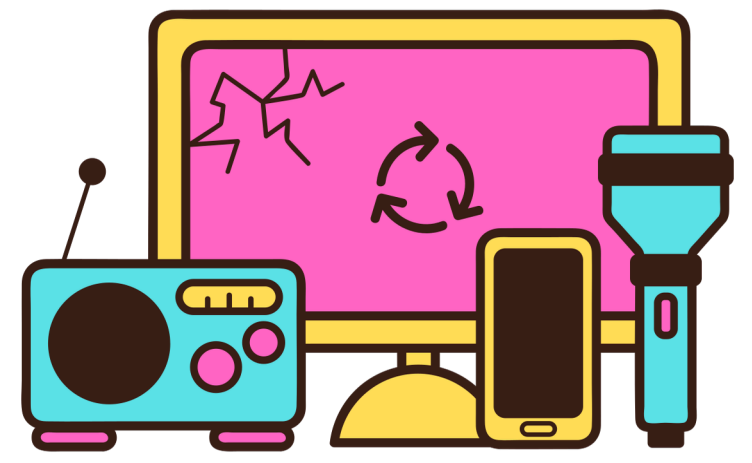


# Electronic Recycling Event



**April 12th 8 am - 11:30 am**

**Register: [www.co.portage.wi.gov/activities](http://www.co.portage.wi.gov/activities)**

**Anyone not registered will be turned away.**

**Portage County Transfer Facility**

**600 Moore Road, Plover**

**Follow signs. Enter off County Road R.**

**Any traffic entering off Apache will be rerouted.**

**Cost:** \$20 per vehicle. Limit 25 items.  
Cash or Check Only. Please bring exact change & checks prewritten out to PCSW.

## **ACCEPTED AT THE EVENT**

cable boxes, cables & cords, cameras & camcorders, cell phones/PDAs & chargers, clocks, coffee makers, copiers, printers, scanners & fax machines, desktop computer towers & peripherals, docking stations, DVD/VHS/Blu-Ray players (no discs), external drives (all types), e-readers, fans, hair dryers, instant pots, landline phones, laptop computers & peripherals, monitors (all types), MP3 & iPod players, microwaves, projectors, radios, remote controls, satellite dishes & receivers, servers, slow cookers, smart watches, stereos & speakers, tablets, toasters, TVs (all types), UPS & jump starters, video game consoles & controllers

## **NOT ACCEPTED**

ballasts, batteries, bulbs/lamps, capacitors, dehumidifiers, dryers, gas cylinders, ink & toner cartridges, holiday lights, liquids, medical & radioactive wastes, medical & lab equipment, refrigerators, smoke detectors, stoves, vape pens, washing machines

**Residents only, no businesses.**

Portage County Solid Waste  
(715) 343-6297

[www.co.portage.wi.gov/396/Solid-Waste](http://www.co.portage.wi.gov/396/Solid-Waste)

